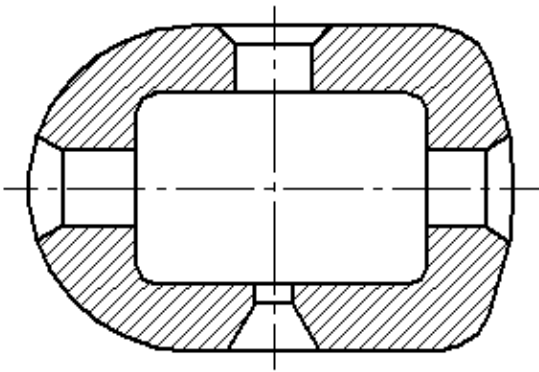


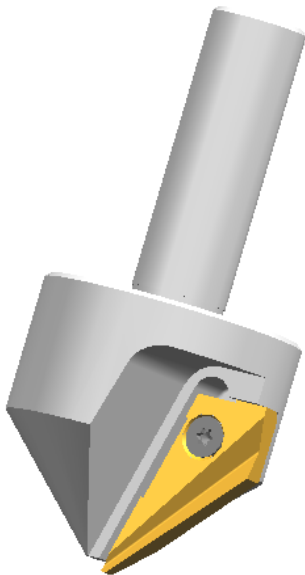
## 沉头孔刀具

可互换刀片式的沉头孔刀具，  
沉头孔加工尺寸范围大，  
并且机加工过程绝无震动。

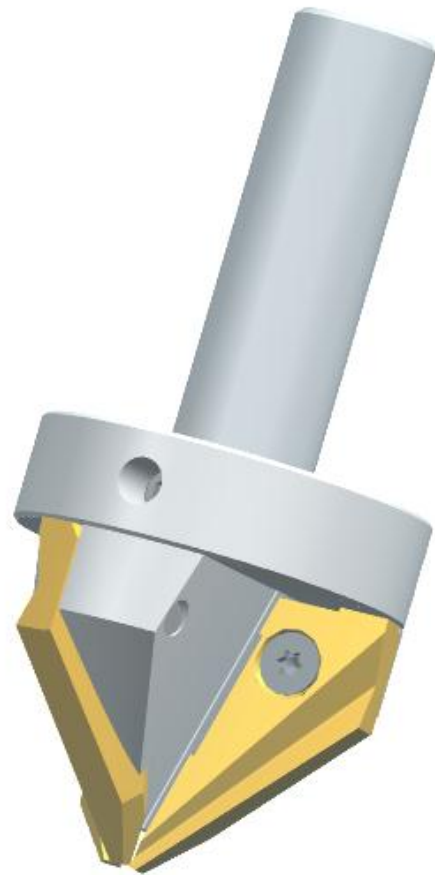


## Countersinking Tool

Countersink tool with interchangeable blades. Chatter-free machining with a large countersink range. Single insert or three lip versions



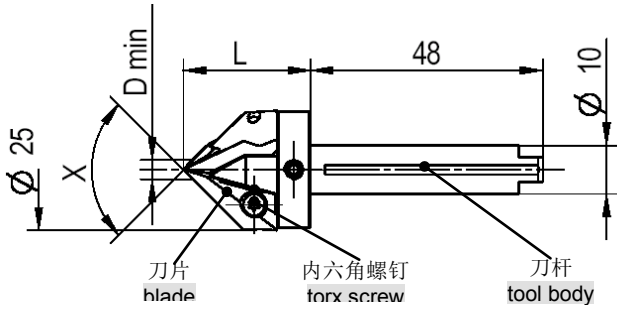
# GH-K



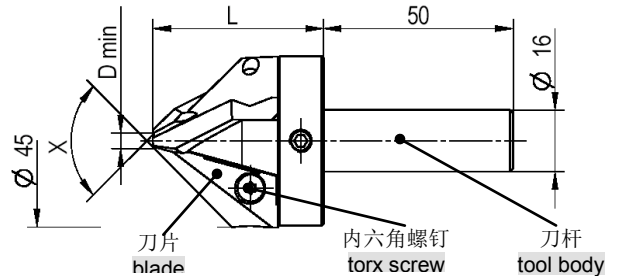
# GH-K刀具 (三刀片设计)

## GH-K Tools (three lips)

### GH-K 25



### GH-K 45



系列 series	角度 X angle X	D min.	L	垫片 *** shim *** GH-K-U-	内六角螺钉** torx screw ** GH-H-S-	内六角扳手 torx driver GH-H-S-	订货号 *) order No. *) GH-K-B-
<b>GH-K 25</b>	90°	3	26	0001	0008	2014	0001
	60°	3	34	0004	0008	2014	0601
<b>GH-K 45</b>	90°	4	45	0002	0009	2016	0012
	60°	9	56	0005	0009	2016	0612

*) 不带刀片以及垫片的刀具	*) Tool without blade without shim
***) GH-H-S-0008使用T9内六角螺钉 GH-H-S-0009使用T15内六角螺钉	***) GH-S-H-0008 has torx size T9 GH-S-H-0009 has torx size T15
***) 薄垫片能够加厚刀刃的几何形状0.05毫米。 这种几何形状的改变能够使刀具适应不同加工材质。 薄垫片只能放在刀片与刀体之间。	***) Shim to change the cutting geometry 0.05mm thick. With this geometry change you are able to tune the tool for different materials. This shims have to be placed between blade and tool body.
可以定制MT刀柄以及inch刀柄	MT shank and inch shank on request

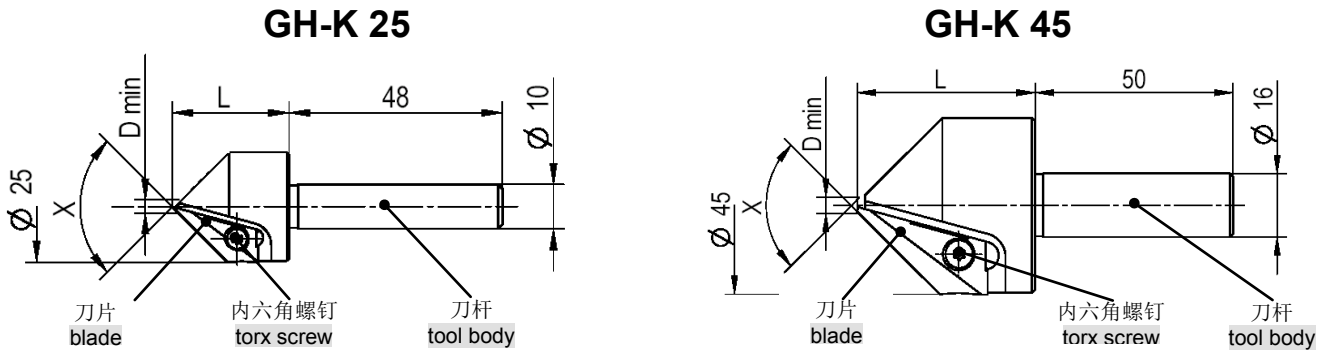
## GH-K配套刀片一览

### GH-K Blades overview

三刀片套装 set of three			订货号 Order No.	
类型 series	角度 angle	材质 material	无涂层 uncoated	TiN涂层 TiN
			<b>GH-K-M-</b>	<b>GH-K-M-</b>
<b>GH-K 25</b>	90°	HSS-E	-----	0001
		carbide	0007	0017
	60°	HSS-E	-----	-----
		carbide	0607	0617
<b>GH-K 45</b>	90°	HSS-E	-----	0002
		carbide	0008	0018
	60°	HSS-E	-----	-----
		carbide	0608	0618

# GH-K刀具 (单刀片设计)

## GH-K Tools (single blade design)



类型 series	角度 X angle X	D min.	L	垫片 ***) shim ***)	内六角螺钉**) torx screw **)	内六角扳手 torx driver	订货号*) order No. *)
				GH-K-U-	GH-H-S-	GH-H-S-	GH-K-B-
<b>GH-K 25</b>	90°	3	26	0007	0008	2014	0010
<b>GH-K 45</b>	90°	4	45	0008	0009	2016	0011

*) 不带刀片以及垫片的刀具	*) Tool without blade without shim
***) GH-H-S-0008使用T9内六角螺钉 GH-H-S-0009使用T15内六角螺钉	***) GH-S-H-0008 has torx size T9 GH-S-H-0009 has torx size T15
**) 薄垫片能够加厚刀刃的几何形状0.05毫米。 这种几何形状的改变能够使刀具适应不同加工材质。 薄垫片只能放在刀片与刀体之间。	**) Shim to change the cutting geometry 0.05mm thick. With this geometry change you are able to tune the tool for different materials. The shims have to be placed between blade and tool body.
可以定制MT刀柄以及inch刀柄	MT shank and inch shank on request
单刀片设计主要适用于大功率进给和较稳定主轴的场合,如同加工波浪形的零件操作。	Use the single blade design only with power feed and stable spindle as well as with a ridge set up.

## GH-K配套刀片一览

### GH-K Blades overview

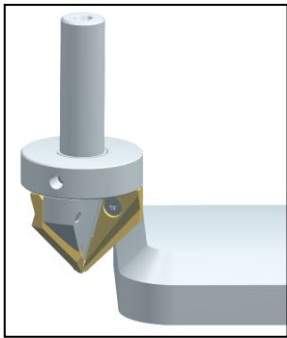
单刀片			订货号	
single bladed			Order No.	
类型	角度	材质	无涂层	TiN涂层
series	angle	material	uncoated	TiN
			GH-K-M-	GH-K-M-
<b>GH-K 25</b>	90°	HSS-E	-----	0022
		carbide	0023	0024
<b>GH-K 45</b>	90°	HSS-E	-----	0028
		carbide	0029	0030

# GH-K 铯孔刀具

## GH-K Countersinking Tool

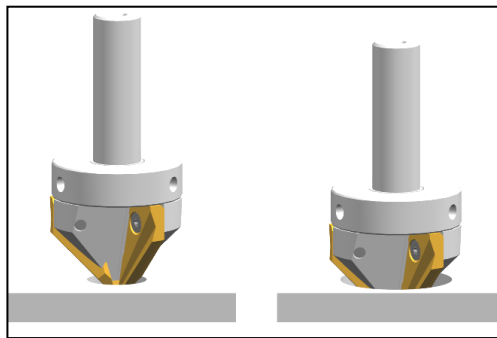
- 沉头孔加工直径范围可以从 $\varnothing 3\text{mm}$ 到 $\varnothing 45\text{mm}$
- 机加工过程中绝无震刀现象
- 能够铣圆角
- 配硬质合金刀片或高速钢刀片
- 刀片能够重新研磨多次使用
- 可以自由选择涂层
- 通用性强
- 可选内冷却
- 薄垫片能够改变刀片的切削后角来获得更好的切削力

- Large countersink range from  $\varnothing 3\text{mm}$  up to  $\varnothing 45\text{mm}$
- Chatter-free machining
- Circular milling is possible
- Inserts in solid carbide and HSS-E
- Re-grindable inserts
- all coatings possible
- Universal useable
- Optional with through coolant
- Shim to change the clearance geometry for a more aggressive cutting



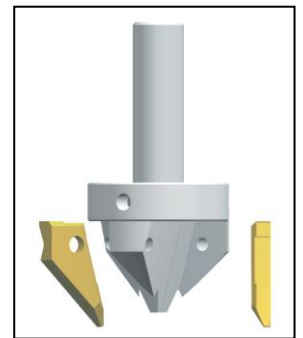
铣圆角

Circular milling



超大沉头孔加工尺寸

Large countersink range



可互换的刀片组

Interchangeable blades

**HEULE**  
**WERKZEUG AG**  
CH-9436 Balgach/Switzerland

**USA:**  
**HEULE TOOL**  
**CORPORATION**  
4722A Interstate Drive  
Cincinnati, Ohio 45246 / USA

Telephone +41-71 726 38 38  
Telefax +41-71 726 38 39  
Internet www.heule.com  
E-Mail info@heule.com

Telephone +1 (513) 860 99 00  
Telefax +1 (513) 860 99 92  
Internet www.heuletool.com  
E-Mail usa@heule.com

经销商:  
Represented by:

HEULE Trading (Wuxi) Company Limited  
Telephone: 0510 8202 2404  
Telefax: 0510 8279 7040