

NEW
PRODUCT!

ASM90-LN系列

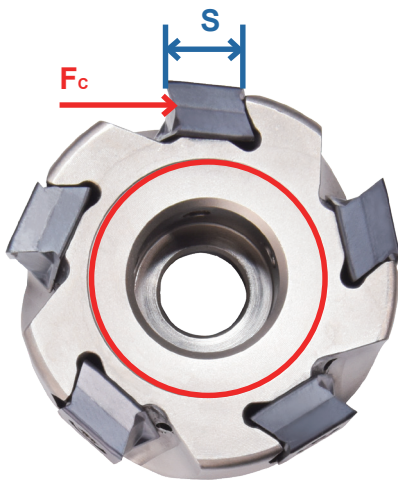
方肩铣刀、玉米铣刀



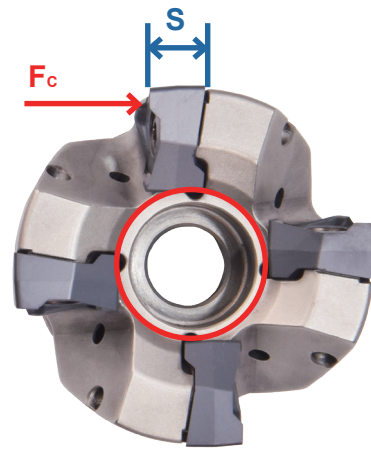
澳克泰工具推出90°大切深方肩铣刀，配备立装双面4个切削刃刀片，为方肩铣削提供一个非常好的加工方案。刀片采用三种槽型结合澳克泰最新的CVD和PVD涂层技术，可实现更卓越的性能和更好的表面质量，能覆盖绝大多数被加工材料应用需求。

● ASM90-LN方肩铣刀

- 精准的90°方肩铣刀，刀盘直径范围：Φ20-Φ160M
- LHNU 0904/1306刀片不仅可以装配方肩刀盘，还可以共用于玉米铣刀盘
- 刀片正轴向前角设计，切削轻快、易于排屑
- H级精磨级刀片，重复安装精度高，刀片圆角丰富：R0.4/0.8/1.2/1.6/2.0/2.4/3.1
- 刀片带有修光刃，适用性广，可以获得很好的表面粗糙度
- 双面4刃刀片、经济性好、强壮的刃口，可以获得更高的加工效率
- 多种接口形式：芯轴套式、圆柱型、侧固式、螺纹接口式
- 全齿型玉米铣刀，具有高金属去除率，切深大、效率高，被誉为“粗加工利器”





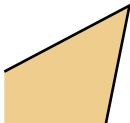
刀片切向布置



刀片径向布置

- 切向布齿刀盘的优点：
 - 芯部面积大幅度增大，刀体刚性得到加强；
 - 在承受切削力方向上，刀片厚度大，可以抵抗更大的切削力，实现更高进给；

● 断屑槽特性

槽型	刃口形状	应用场合
MR2		<ul style="list-style-type: none"> 通用型; 适用于中等及以上加工工况;
MM3		<ul style="list-style-type: none"> 易切型; 用于良好的加工条件; 适用半精加工, 精加工;
FM2		<ul style="list-style-type: none"> 锋利型; 专为铝加工设计; 低切削力锋利的切削刃;

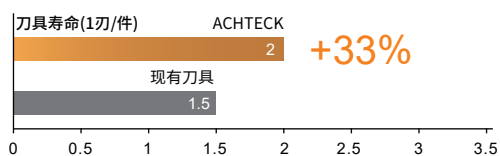
● 牌号应用

牌号	涂层	材料					
		P	M	K	S	N	H
AP301U	PVD	●	◐		○		
AP351U	PVD	●	◐		○		
AP403M	PVD		●		◐		
AC301K	CVD			●			◐
AP351K	PVD			●			

● 标记: 第一选择 ◐ 标记: 第二选择 ○ 标记: 补充应用

◆ **加工案例**

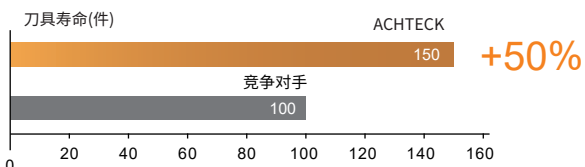
工件名称：风电轮毂
 加工材料：QT400
 刀片型号：LNHU 160708ER-MR2 AC301K
 刀盘型号：ASM90-160-Z08-A40R-LN16
 加工内容：凸台安装面
 切削参数：Vc=200m/min, ap=8mm, ae=100mm, fz=0.22
 切削方式：湿切



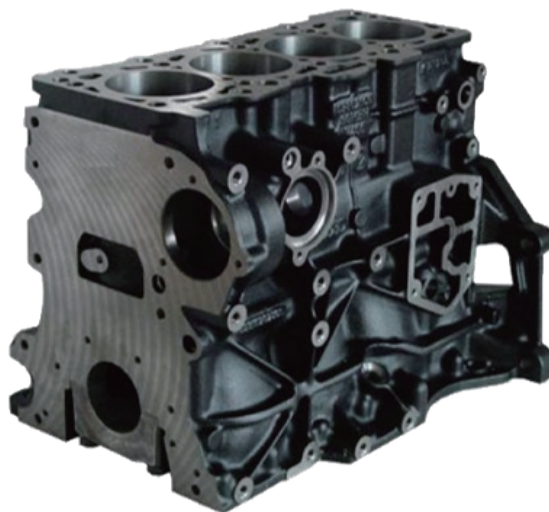
结果对比：ACHTECK产品比客户现有刀具寿命提升33%



工件名称：发动机缸体
 加工材料：HT250
 刀片型号：LNHU 090408ER-MR2 AP351K
 刀盘型号：ASM90-032-Z04-W32R-LN09-C
 加工内容：缸体侧面的凸台
 切削参数：Vc=171m/min, ap=3mm, ae=16mm, fz=0.13
 切削方式：湿切

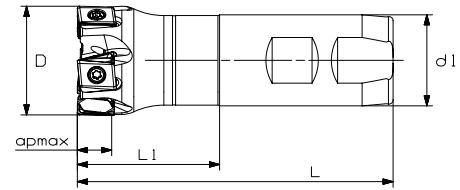


结果对比：ACHTECK刀具寿命比对手提升50%



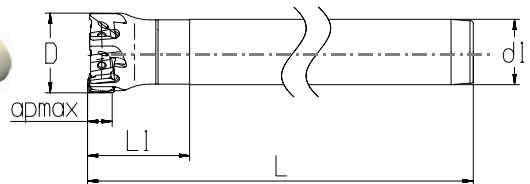
◆ 刀盘库存型号

ASM90-LN 方肩铣刀



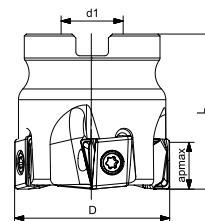
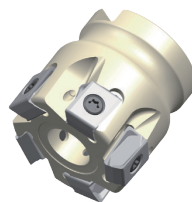
型号	尺寸					内冷	Z	刀片
	D	d1	L	ISO	apmax			
ASM90-025-Z03-W25R-LN09-C	25	25	100	45	8.0		3	LNHU 0904
ASM90-025-Z04-W25R-LN09-C	25	25	100	45	8.0		4	
ASM90-032-Z04-W32R-LN09-C	32	32	110	50	8.0		4	
ASM90-032-Z05-W32R-LN09-C	32	32	110	50	8.0		5	
ASM90-040-Z04-W32R-LN09-C	40	32	110	25	8.0		4	
ASM90-040-Z06-W32R-LN09-C	40	32	110	25	8.0		6	
ASM90-040-Z05-W32R-LN13-C	40	32	120	50	12.0		5	LNHU 1306

ASM90-LN 方肩铣刀



型号	尺寸					内冷	Z	刀片
	D	d1	L	ISO	apmax			
ASM90-020-Z02-C20R-LN09-L110	20	20	110	31	8.0		2	LNHU 0904
ASM90-020-Z03-C20R-LN09-L110	20	20	110	31	8.0		3	
ASM90-025-Z03-C25R-LN09-L200-C	25	25	200	40	8.0		3	
ASM90-025-Z04-C25R-LN09-L200-C	25	25	200	40	8.0		4	
ASM90-032-Z04-C32R-LN09-L250-C	32	32	250	50	8.0		4	
ASM90-032-Z05-C32R-LN09-L250-C	32	32	250	50	8.0		5	

ASM90-LN 方肩铣刀



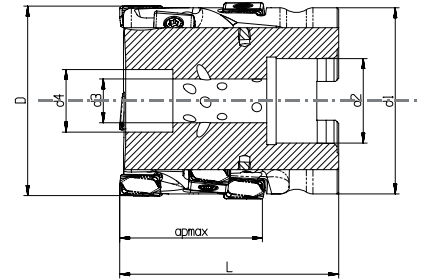
型号	尺寸					内冷	Z	刀片
	D	d1	L	ISO	apmax			
ASM90-040-Z04-A16R-LN09-C	40	16	40	A	8.0		4	LNHU 0904
ASM90-040-Z06-A16R-LN09-C	40	16	40	A	8.0		6	
ASM90-050-Z05-A22R-LN09-C	50	22	40	A	8.0		5	
ASM90-050-Z07-A22R-LN09-C	50	22	40	A	8.0		7	
ASM90-063-Z07-A22R-LN09-C	63	22	40	A	8.0		7	
ASM90-063-Z10-A22R-LN09-C	63	22	40	A	8.0		10	
ASM90-080-Z09-A27R-LN09-C	80	27	50	A	8.0		9	
ASM90-080-Z13-A27R-LN09-C	80	27	50	A	8.0		13	
ASM90-040-Z04-A16R-LN13-C	40	16	40	A	12.0		4	LNHU 1306
ASM90-040-Z04-A16R-LN13-C	40	16	40	A	12.0		5	
ASM90-050-Z05-A22R-LN13-C	50	22	40	A	12.0		5	
ASM90-050-Z06-A22R-LN13-C	50	22	40	A	12.0		6	
ASM90-063-Z04-A22R-LN13-C	63	22	40	A	12.0		4	
ASM90-063-Z06-A22R-LN13-C	63	22	40	A	12.0		6	
ASM90-063-Z08-A22R-LN13-C	63	22	40	A	12.0		8	
ASM90-080-Z05-A27R-LN13-C	80	27	50	A	12.0		5	
ASM90-080-Z07-A27R-LN13-C	80	27	50	A	12.0		7	
ASM90-080-Z10-A27R-LN13-C	80	27	50	A	12.0		10	
ASM90-100-Z07-A32R-LN13-C	100	32	50	A	12.0		7	
ASM90-100-Z09-A32R-LN13-C	100	32	50	A	12.0		9	
ASM90-100-Z13-A32R-LN13-C	100	32	50	A	12.0		13	
ASM90-125-Z09-A40R-LN13-C	125	40	63	A	12.0		9	
ASM90-125-Z11-A40R-LN13-C	125	40	63	A	12.0		11	
ASM90-125-Z16-A40R-LN13-C	125	40	63	A	12.0		16	
ASM90-160-Z09-A40R-LN13	160	40	63	A	12.0		9	
ASM90-160-Z13-A40R-LN13	160	40	63	A	12.0		13	
ASM90-063-Z04-A22R-LN16-C	63	22	40	A	15		4	LNHU 1607
ASM90-080-Z05-A27R-LN16-C	80	27	50	A	15		5	
ASM90-100-Z06-A32R-LN16-C	100	32	50	A	15		6	
ASM90-125-Z07-A40R-LN16-C	125	40	63	A	15		7	
ASM90-160-Z08-A40R-LN16	160	40	63	A	15		8	

尺寸		刀盘配件	
刀盘尺寸	螺钉	扳手	扭矩
ASM90-LN09	SP030083	DP-TP09	1.8Nm
ASM90-LN13	SP040115	DP-TP15	3.5Nm
ASM90-LN16	SP05013063	DT-TP20	5Nm

加工方式		
面铣	方肩铣	槽铣

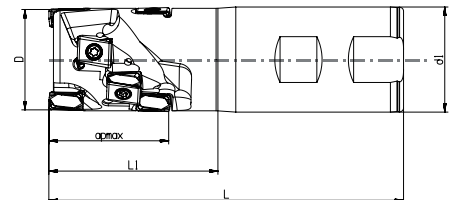
注: 代表有内冷
 代表无内冷

APE90-LN 玉米铣刀盘



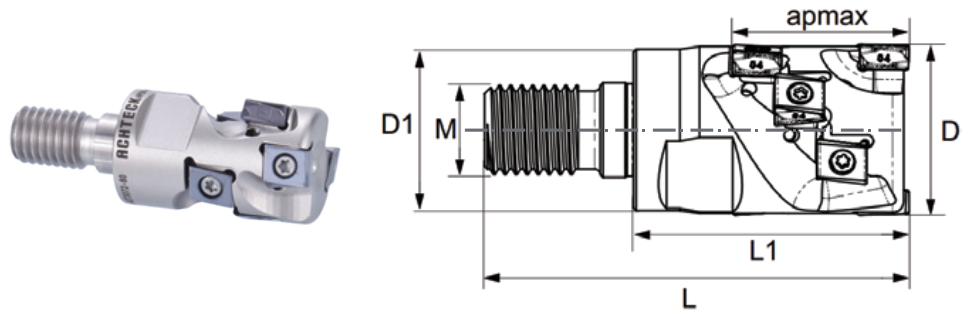
型号	尺寸							内冷	安装螺栓	Z	段数	刀片数量	刀片
	D	d1	L	d2	d3	d4	apmax						
APE90-040-Z03-A16R-LN09-L32-F-C	40	38	55	16	9	15	32		SH080400	3	4	12	LNHU 0904
APE90-040-Z03-A16R-LN09-L40-F-C	40	38	65	16	9	15	40		SH080500	3	5	15	
APE90-050-Z04-A22R-LN09-L48-F-C	50	47.5	75	22	11	18	48		SH100550	4	6	24	
APE90-040-Z02-A16R-LN13-L34-F-C	40	39	55	16	9	15	34		SH100400	2	3	6	LNHU 1306
APE90-040-Z02-A16R-LN13-L45-F-C	40	39	65	16	9	15	45		SH100450	2	4	8	
APE90-050-Z03-A22R-LN13-L34-F-C	50	47.5	55	22	11	18	34		SH100400	3	3	9	
APE90-050-Z03-A22R-LN13-L45-F-C	50	47.5	65	22	11	18	45		SH100450	3	4	12	
APE90-063-Z04-A27R-LN13-L56-F-C	63	59.5	80	27	14	20	56		SH120600	4	5	20	
APE90-063-Z04-A27R-LN13-L45-F-C	63	59.5	70	27	14	20	45		SH120500	4	4	16	
APE90-080-Z05-A32R-LN13-L56-F-C	80	75.6	85	32	18	26	56		SH160650	5	5	25	

APE90-LN 玉米铣刀盘



型号	尺寸					内冷	Z	段数	刀片数量	刀片
	D	d1	L	L1	apmax					
APE90-025-Z02-W25R-LN09-L32-F-C	25	25	100	43	32		2	4	8	LNHU 0904
APE90-032-Z02-W32R-LN09-L32-F-C	32	32	105	44	32		2	4	8	
APE90-032-Z02-W32R-LN09-L40-F-C	32	32	110	50	40		2	5	10	
APE90-040-Z03-W40R-LN09-L40-F-C	40	40	125	55	40		3	5	15	
APE90-040-Z03-W40R-LN09-L48-F-C	40	40	130	59	48		3	6	18	
APE90-040-Z02-W40R-LN13-L34-F-C	40	40	54	120	34		2	3	6	LNHU 1306
APE90-040-Z02-W40R-LN13-L45-F-C	40	40	64	135	45		2	4	8	

APE90-LN 玉米铣刀盘



型号	尺寸						内冷	Z	段数	刀片数量	刀片
	D	d1	L	L1	M	apmax					
APE90-025-Z02-M12R-LN09-L24-F-C	25	23.4	64	40	12	24		2	3	6	LNHU 0904
APE90-032-Z02-M16R-LN09-L24-F-C	32	30	67	40	16	24		2	3	6	
APE90-032-Z02-M16R-LN09-L32-F-C	32	30	77	50	16	32		2	4	8	

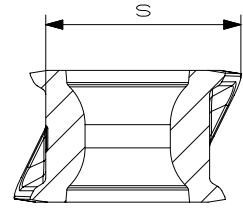
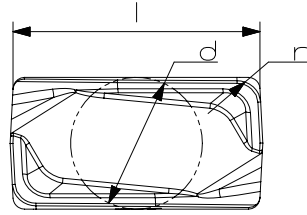
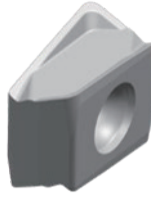
尺寸		刀盘配件		
刀盘尺寸	螺钉型号	扳手型号	安装扳手	扭矩
ASM90-LN09	SP030083	DP-TP09		1.8Nm
ASM90-LN13	SP040115	DP-TP15		3.5Nm
ASM90-LN16	SP05013063	DT-TP20		5Nm

加工方式		
面铣	方肩铣	槽铣

安装螺栓	型号	螺栓规格	扭矩值
	SH080400	M8*40	41N-m
	SH080500	M8*50	41N-m
	SH100550	M10*55	81N-m
	SH100400	M10*40	81N-m
	SH100450	M10*45	81N-m
	SH120500	M12*50	142N-m
	SH120600	M12*60	142N-m
	SH160650	M16*65	350N-m

● 刀片库存型号

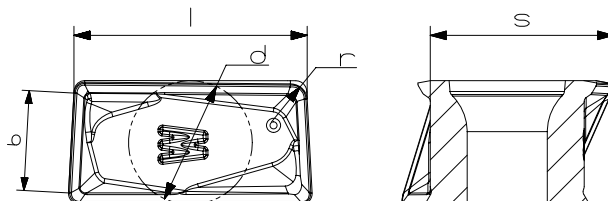
LNHU 0904



刀片	型号	尺寸					材料						
							P			M	K		无涂层
		l	d	s	r	b	AP301U	AC301P	AP351U	AP403M	AC301K	AP351K	AW100K
LNHU 0904	LNHU 090404ER-FM2	9	4.5	7.5	0.4	-							●
	LNHU 090404ER-MM3	9	4.5	7.5	0.4	-			●	●			
	LNHU 090404ER-MR2	9	4.5	7.5	0.4	-	●		●	●	●	●	
	LNHU 090408ER-MR2	9	4.5	7.45	0.8	-	●		●	●	●	●	
	LNHU 090412ER-MR2	9	4.5	7.4	1.2	-	●			●	●		
	LNHU 090416ER-MR2	9	4.5	7.35	1.6	-	●			●	●		
	LNHU 090420ER-MR2	9	4.5	7.31	2	-	●			●	●		
LNHU1306	LNHU 130608ER-FM2	13.02	6.8	10.11	0.8	-							●
	LNHU 130608ER-MM3	13.02	6.8	10.19	0.8	-				●			
	LNHU 130608ER-MR2	13.02	6.8	10.15	0.8	-		●	●	●	●	●	
	LNHU 130612ER-MR2	13.02	6.8	10.09	1.2	-			●	●	●		
	LNHU 130616ER-MR2	13.02	6.8	10.03	1.6	-			●	●	●		
	LNHU 130620ER-MR2	13.02	6.8	9.99	2	-			●	●			
	LNHU 130624ER-MR2	13.02	6.8	9.92	2.4	-			●	●			
	LNHU 130631ER-MR2	13.02	6.8	9.83	3.1	-			●	●	●		
LNHU 1607	LNHU 160708ER-MR2	16	7.2	13	0.8		●		●		●	●	
	LNHU 160716ER-MR2	16	7.2	13	1.6		●				●		

● 刀片库存型号

修光刃刀片



刀片	型号	尺寸					材料						
							P			M	K	无涂层	
		l	d	s	r	b	AP301U	AC301P	AP351U	AP403M	AC301K	AP351K	AW100K
	LNHU 0904PDER-W	9.24	4.5	7.4	0.4	3.6	●				●		
	LNHU 1306PDER-W	13.39	6.8	10.02	0.8	5.6	●				●		