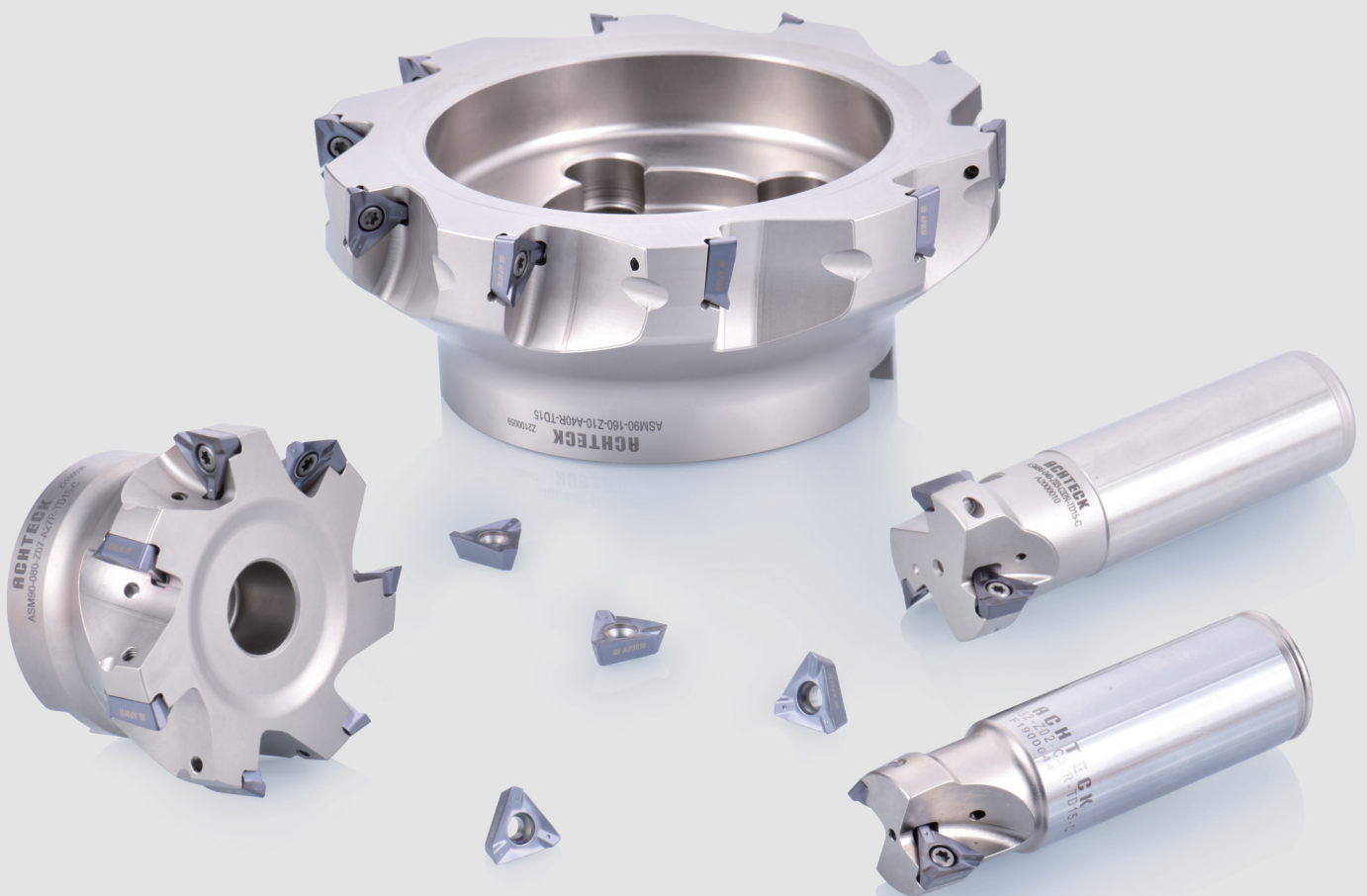


**NEW**  
**PRODUCT!**

# ASM90-TD15

高精度、轻快型方肩铣刀



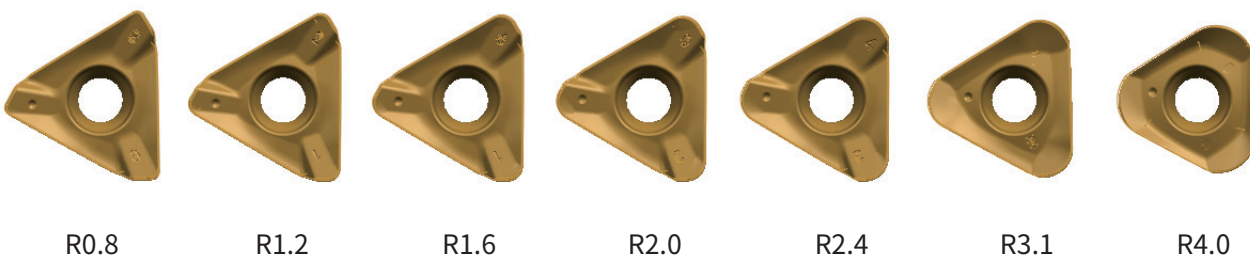
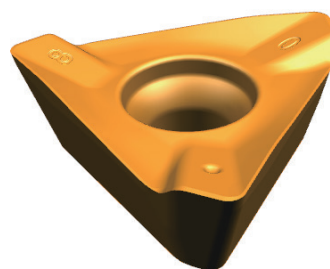
澳克泰工具全新推出正型方肩铣刀, 提供了轻快切削的方肩铣解决方案。

三角形刀片采用了MM3及MM4槽型结合澳克泰的CVD和PVD涂层技术, 可以实现更优异的性能和更好的表面质量, 覆盖钢、不锈钢、铸铁、高温合金等材料加工。

## ◆ ASM90-TD15刀片介绍

刀片特点:

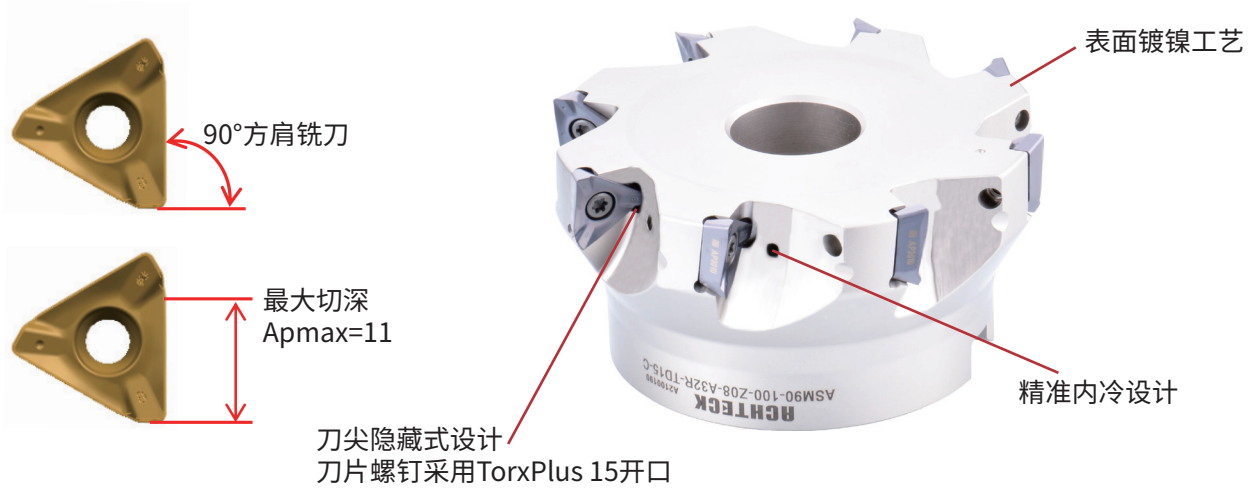
- 正型铣刀片
- 三个切削刃, 经济性好
- 正前角及带螺旋角设计, 切削轻快
- 刀片带短修光刃设计
- 有M和H级刀片选择



## ◆ 刀片类型

- 圆角范围: R0.8, R1.2, R1.6, R2.0, R2.4, R3.1, R4.0
- 槽型: MM4, MM3, FM2
- 材质: AP301U, AP351M, AP403M, AC301K, AP351K

• **ASM90-TD15刀盘介绍**



- 应用范围:适用于方肩铣、面铣、槽铣、斜坡铣、螺纹插补铣
- 通用性好:适用钢件、铸铁、不锈钢的粗,半精和精加工场合
- 刀体两种齿距:密齿和疏齿
- 两种接口

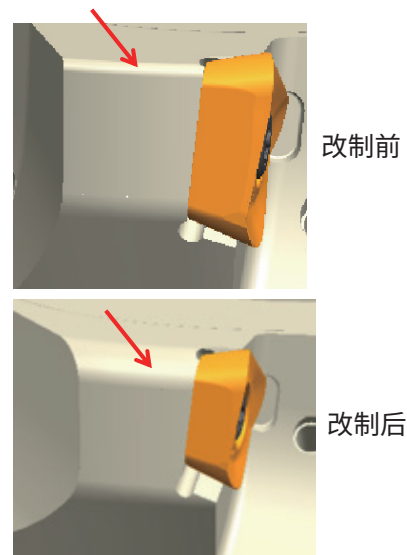
刀杆式直径:Φ32-40mm

芯轴式直径:Φ40-200mm



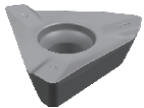

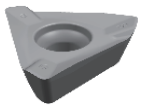

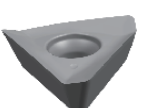

• **ASM90-TD15刀盘介绍**

当使用大圆角刀片时,刀体需要改制

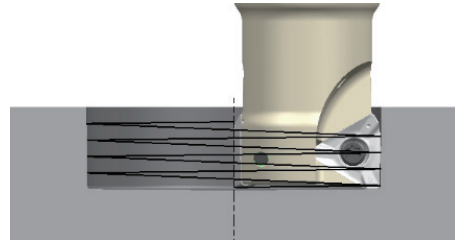
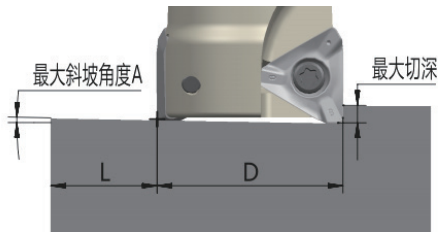


TDMT 150531R-MM4	刀盘端面周边缘R角车削至R2.0
TDMT 150540R-MM4	刀盘端面周边缘R角车削至R4.0

• **TD15系列刀片槽型描述**

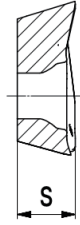
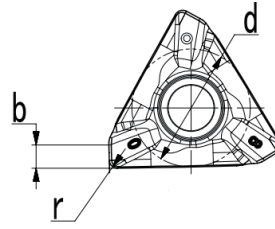
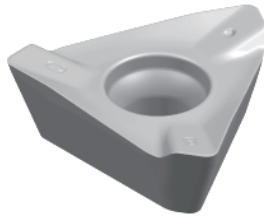
刀片	断屑槽	刃口形状	应用场合
	<b>MM4</b>		· 用于中等加工工况 · 通用加工首选槽型
	<b>MM3</b>		· 用于较好的工况及精加工 · 切削力低,可用于小功率机床
	<b>FM2</b>		· 锋利槽型 · 低切削力槽型,用于弱工况 · 用于铝合金材料加工

◆ **ASM90-TD15应用参数推荐**



刀具直径 (mm)	直线斜坡铣削			螺旋插补铣孔		
	最大斜坡角 (°)	最小长度 (mm)	最大切深 (mm)	最小加工孔径 (mm)	最大加工孔径 (mm)	最大螺距 (mm)
32	1.4	479	11.5	53.5		1.4
	1.4	479	11.5		64.0	2.1
40	1.0	633	11.5	70.1		1.5
	0.7	957	11.5		80.0	1.3
50	0.8	824	11.5	90.1		1.5
	0.8	824	11.5		100.0	1.9
63	0.6	1073	11.5	116.1		1.5
	0.6	1073	11.5		126.0	1.8
80	0.5	1399	11.5	150.3		1.5
	0.5	1399	11.5		160.0	1.8
100	0.3	2144	11.5	190.5		1.3
	0.3	2144	11.5		200.0	1.4
125	0.3	2262	11.5	240.3		1.6
	0.3	2262	11.5		250.0	1.7
160	0.2	2933	11.5	310.3		1.6
	0.2	2933	11.5		320.0	1.7
200	0.2	3692	11.5	390.3		1.6
	0.2	3692	11.5		400.0	1.7

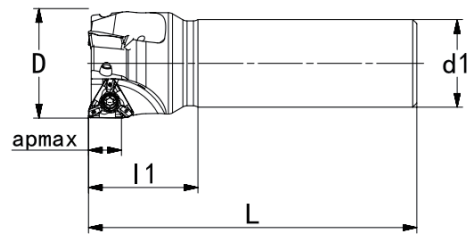
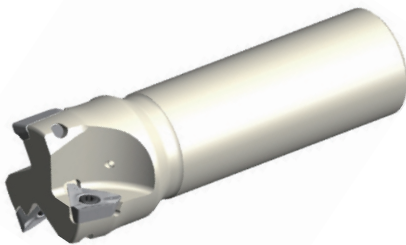
◆ **TD15刀片型号**



型号	尺寸				牌号								
	d	b	s	r	AP301U	AC301P	AP351U	AP403M	AP351M	AC301K	AP351K	AP403S	AW100K
TDMT 150508R-MM4	11.40	1.49	5.6	0.8	●			●	●	●	●		
TDMT 150512R-MM4	11.40	1.0	5.6	1.2	●			●	●	●	●		
TDMT 150516R-MM4	11.40	0.93	5.6	1.6	●			●	●	●	●		
TDMT 150520R-MM4	11.40	0.71	5.6	2.0	●			●					
TDMT 150524R-MM4	11.40	0.59	5.6	2.4				●					
TDMT 150531R-MM4	11.40	0.4	5.56	3.1				●					
TDMT 150540R-MM4	11.40	0.4	5.56	4.0				●					
TDMT 150508R-MM3	11.40	1.49	5.56	0.8	●			●	●				
TDHT 150508R-MM4	11.40	1.5	5.6	0.8	●			●	●				

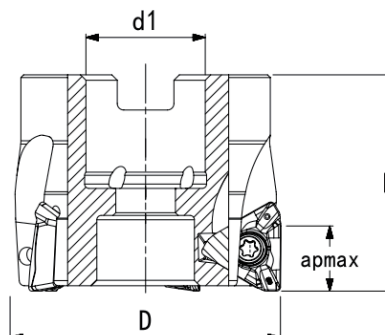
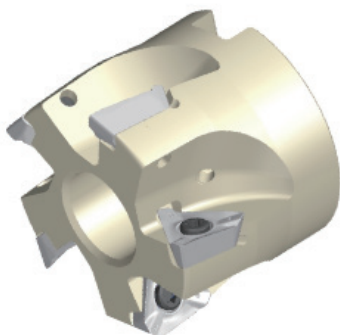
◆ **ASM90-TD15 刀体**

圆柱柄



型号	D	d1	L	L1	apmax	内冷	Z	刀片
ASM90-032-Z02-C32R-TD15-C	32	32	110	40	11		2	TD..1505..
ASM90-032-Z02-C32R-TD15-L200-C	32	32	200	40	11		2	
ASM90-040-Z03-C32R-TD15-C	40	32	120	40	11		3	
ASM90-040-Z03-C32R-TD15-L200-C	40	32	200	40	11		3	

芯轴式

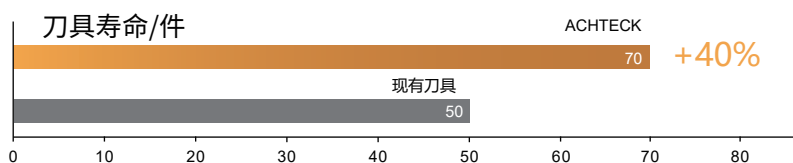


型号	D	d1	L	apmax	内冷	Z	刀片
ASM90-040-Z04-A16R-TD15-C	40	16	40	11		4	TD..1505..
ASM90-050-Z04-A22R-TD15-C	50	22	40	11		4	
ASM90-050-Z05-A22R-TD15-C	50	22	40	11		5	
ASM90-063-Z04-A22R-TD15-C	63	22	40	11		4	
ASM90-063-Z05-A22R-TD15-C	63	22	40	11		5	
ASM90-063-Z06-A22R-TD15-C	63	22	40	11		6	
ASM90-080-Z05-A27R-TD15-C	80	27	50	11		5	
ASM90-080-Z06-A27R-TD15-C	80	27	50	11		6	
ASM90-080-Z07-A27R-TD15-C	80	27	50	11		7	
ASM90-100-Z06-A32R-TD15-C	100	32	50	11		6	
ASM90-100-Z08-A32R-TD15-C	100	32	50	11		8	
ASM90-125-Z07-A40R-TD15-C	125	40	63	11		7	
ASM90-125-Z09-A40R-TD15-C	125	40	63	11		9	
ASM90-160-Z08-A40R-TD15	160	40	63	11		8	
ASM90-160-Z10-A40R-TD15	160	40	63	11		10	
ASM90-200-Z09-A60R-TD15	200	60	63	11		9	
ASM90-200-Z11-A60R-TD15	200	60	63	11		11	

尺寸		刀盘配件			
刀盘直径	螺钉型号	扳手型号	扭力值		
φ32-200			3.5Nm		
	SP040100H	DT-TP15			
刀盘型号		安装螺栓	螺栓型号	螺栓扳手	扳手型号
ASM90-040-Z04-A16R-TD15-C			WD080300		LT-H4

### 加工案例-01

工件名称:泵体  
加工材料:HT250  
刀片型号:TDMT 150508R-MM4 AC301K  
刀盘型号:ASM90-050-Z05-A22R-TD15-C  
加工内容:铣四周平面  
切削参数: $V_c=280\text{m/min}$ ,  $a_p=0.5\text{mm}$ ,  $f_z=0.3$   
切削方式:湿切

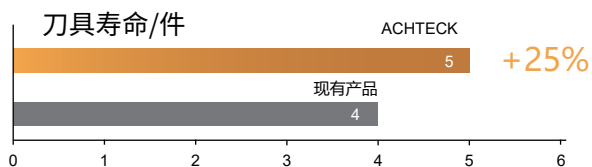


对比结果: ACHTECK刀具寿命比现有刀具提高40%



### 加工案例-02

工件名称:导轨  
加工材料:Q235B  
刀片型号:TDMT 150508R-MM4 AP301U  
刀盘型号:ASM90-100-Z08-A32R-TD15-C  
加工内容:铣导轨面  
切削参数: $V_c=200\text{m}$ ,  $a_p=0.5\text{mm}$ ,  $f_z=0.12$   
切削方式:湿切



对比结果: ACHTECK刀具寿命比现有刀具提高25%

